

ETUDES CARACTERISTIQUES N° 2

Trombone

All° Risoluto ♩ = 116

P. Clodomir

f

7

13

p

19

25

30

mf 3 3

36

3 3 3 3

cresc cen do

43

a piacere

f

48

leggerio

p 3 3 3 3 3 3 3 3

53

Trombone

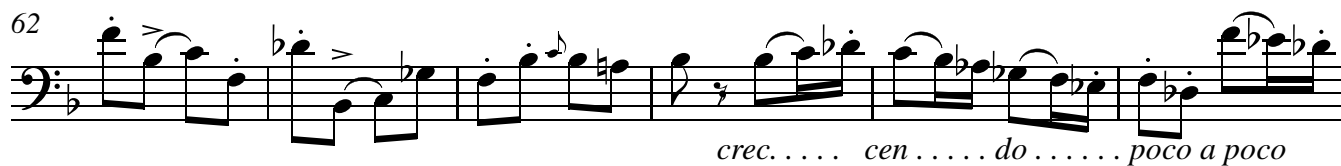
a tempo



58



62



68

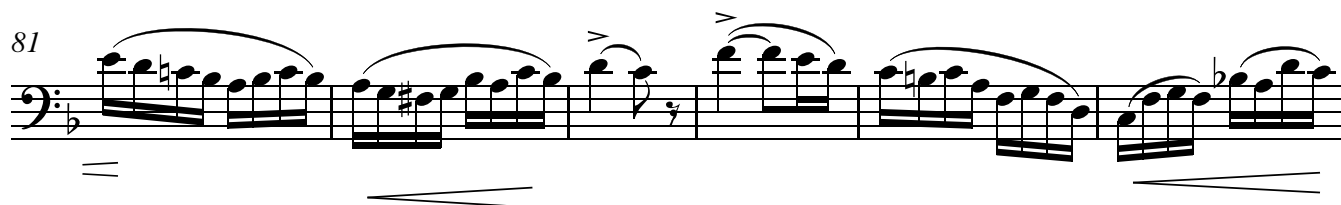


74

1° Tempo



81



87



93



97

